

ProKids

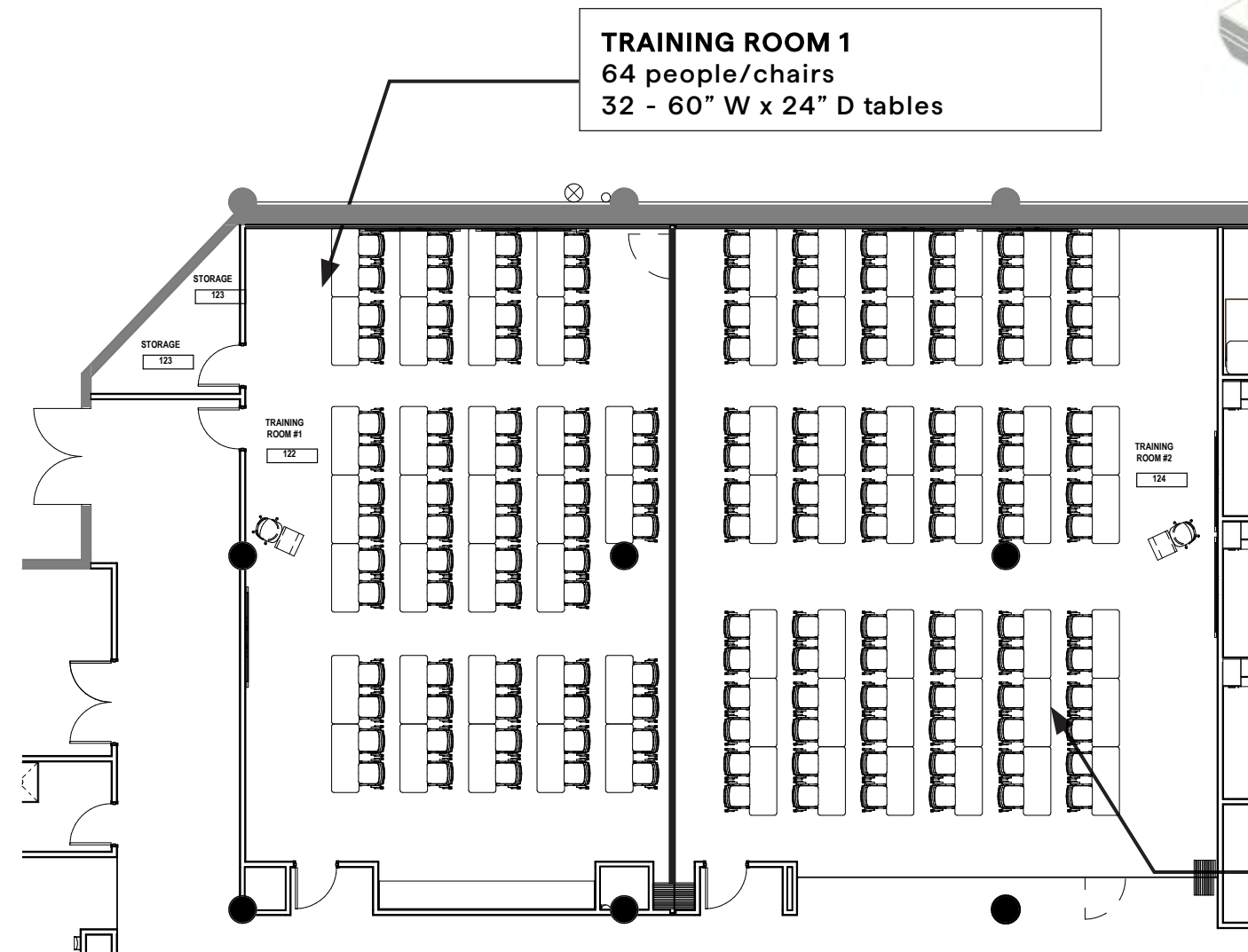
Advocates for Children

Training Room Layouts

LAYOUT #1

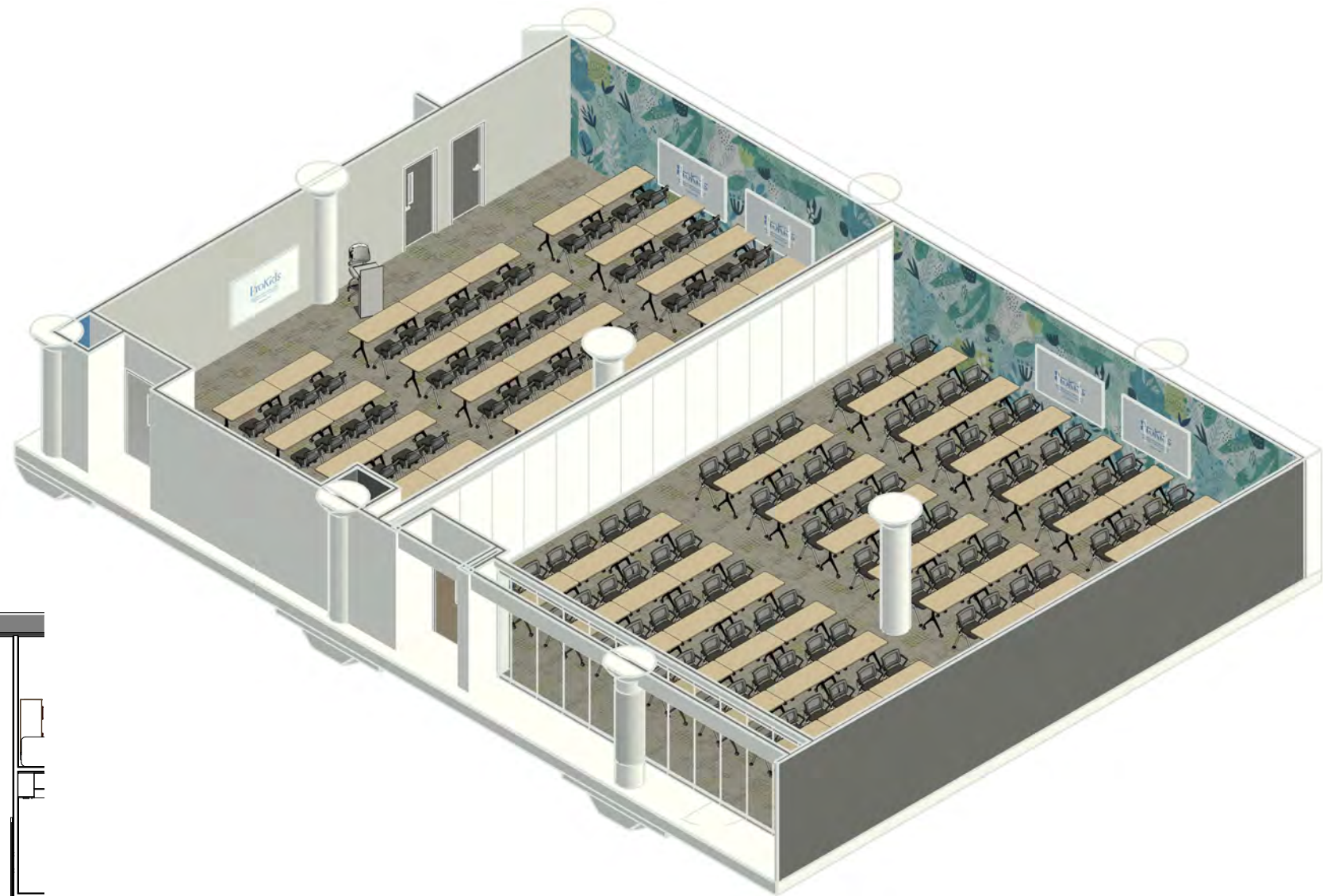
Classroom

Separate rooms with training tables
maximum capacity 148 people



TRAINING ROOM 1
64 people/chairs
32 - 60" W x 24" D tables

TRAINING ROOM 2
84 people /chairs
42 - 60" W x 24" D tables

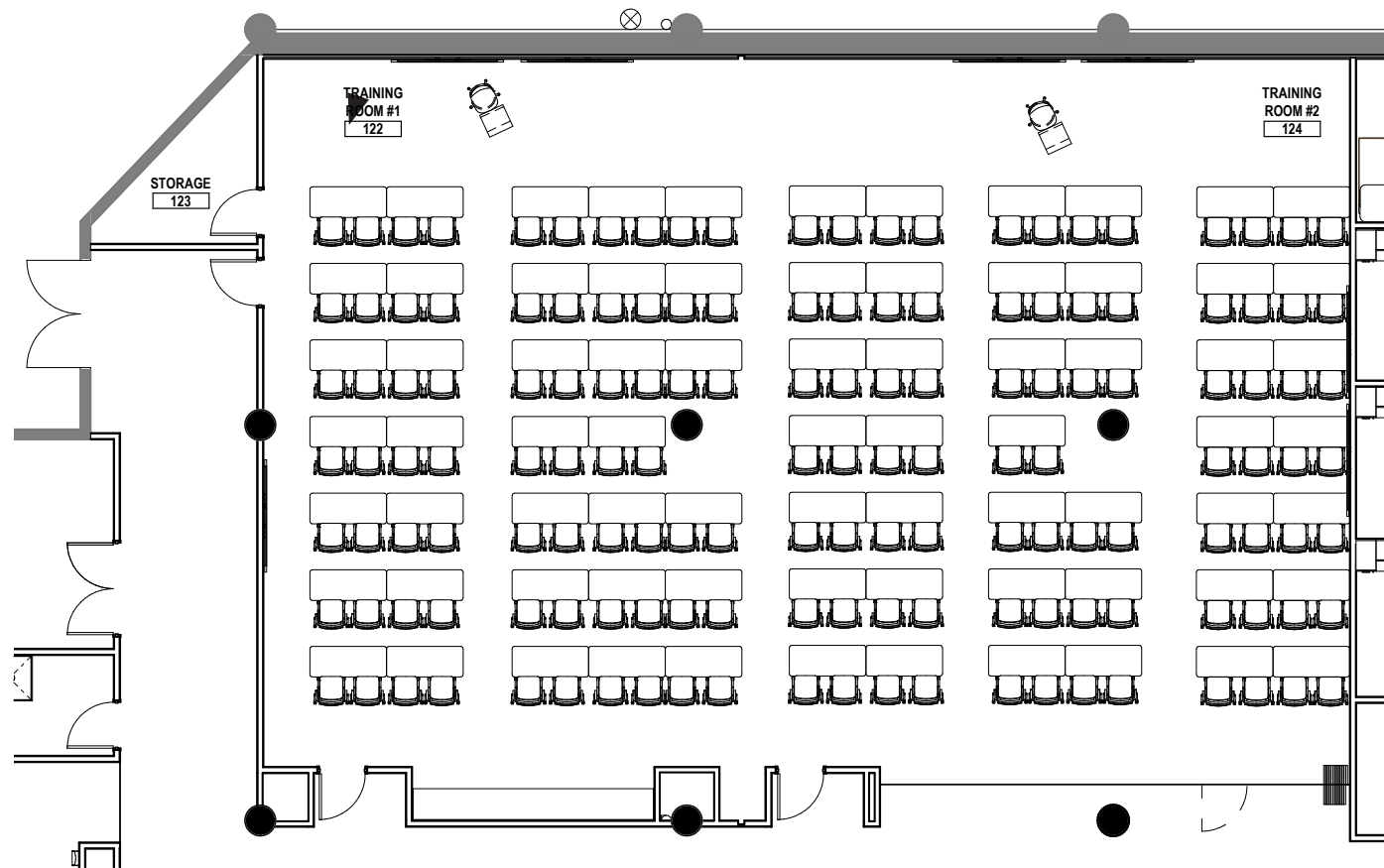
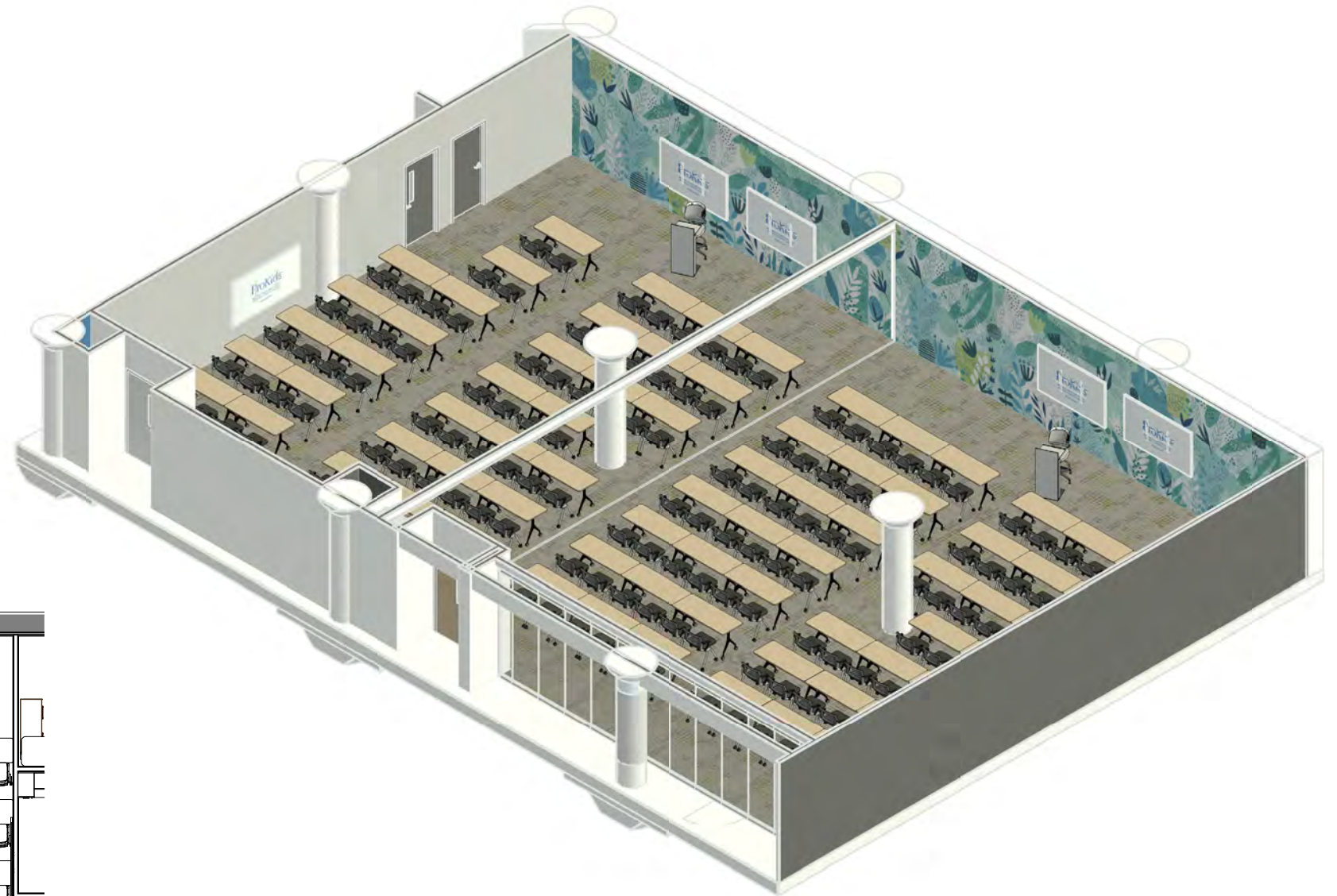


LAYOUT #2

Classroom

1 large room with training tables
maximum capacity 150 people

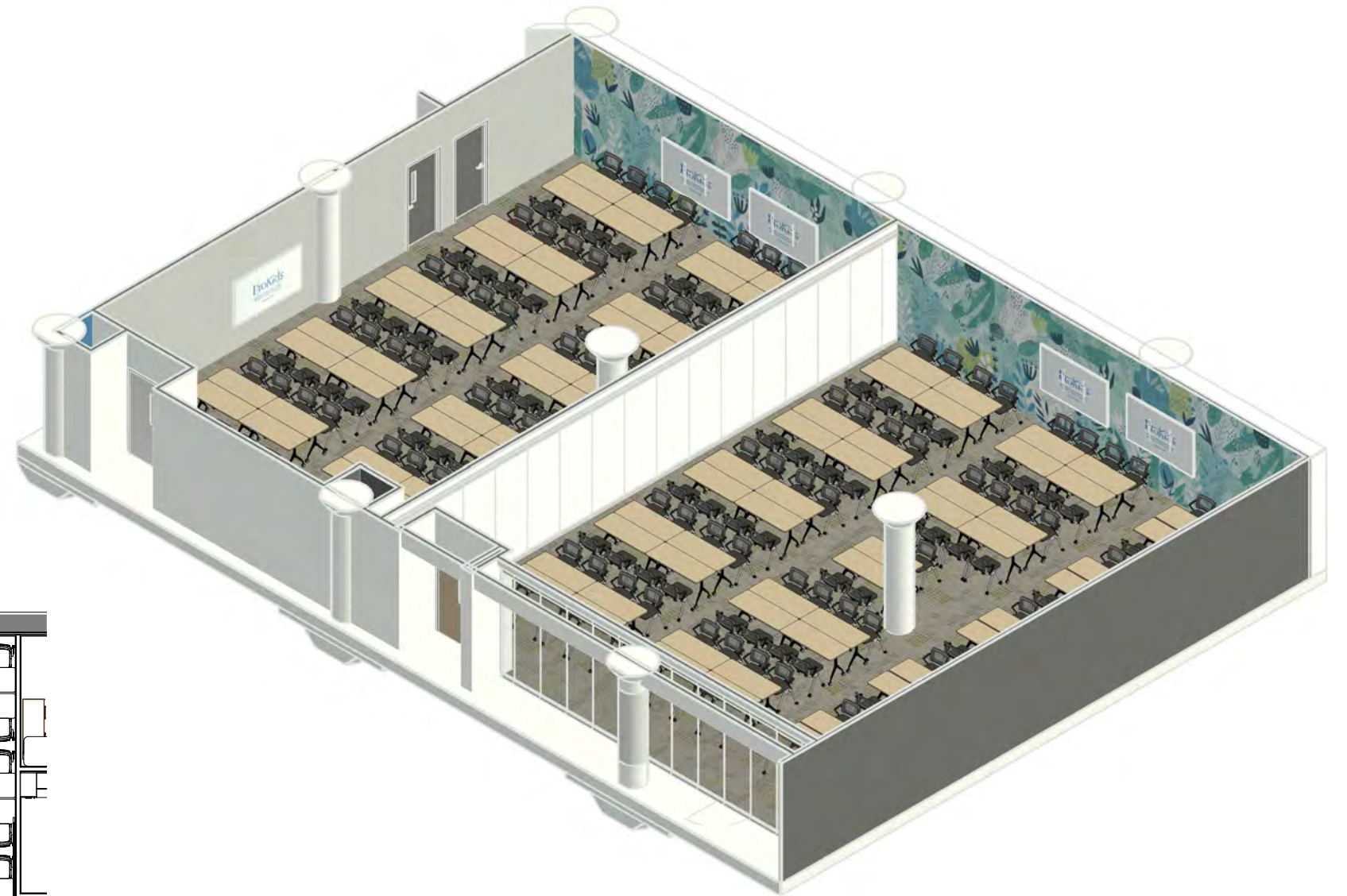
TRAINING ROOMS 1 & 2
150 People/chairs
75 - 60" W x 24" D tables



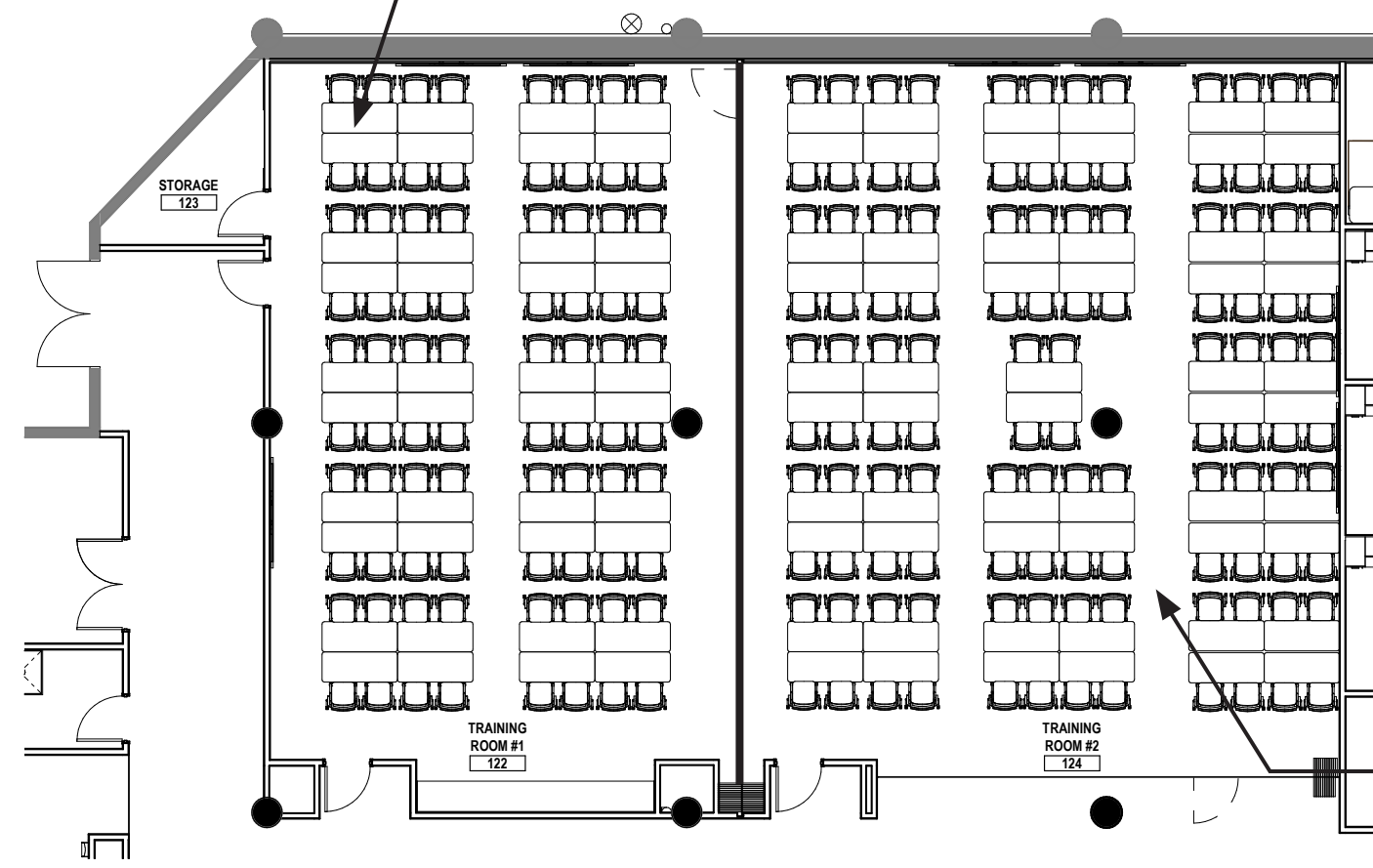
LAYOUT #3

Collaborative

Separate rooms with training tables
maximum capacity 196 people



TRAINING ROOM 1
80 people/chairs
40 - 60" W x 24" D tables



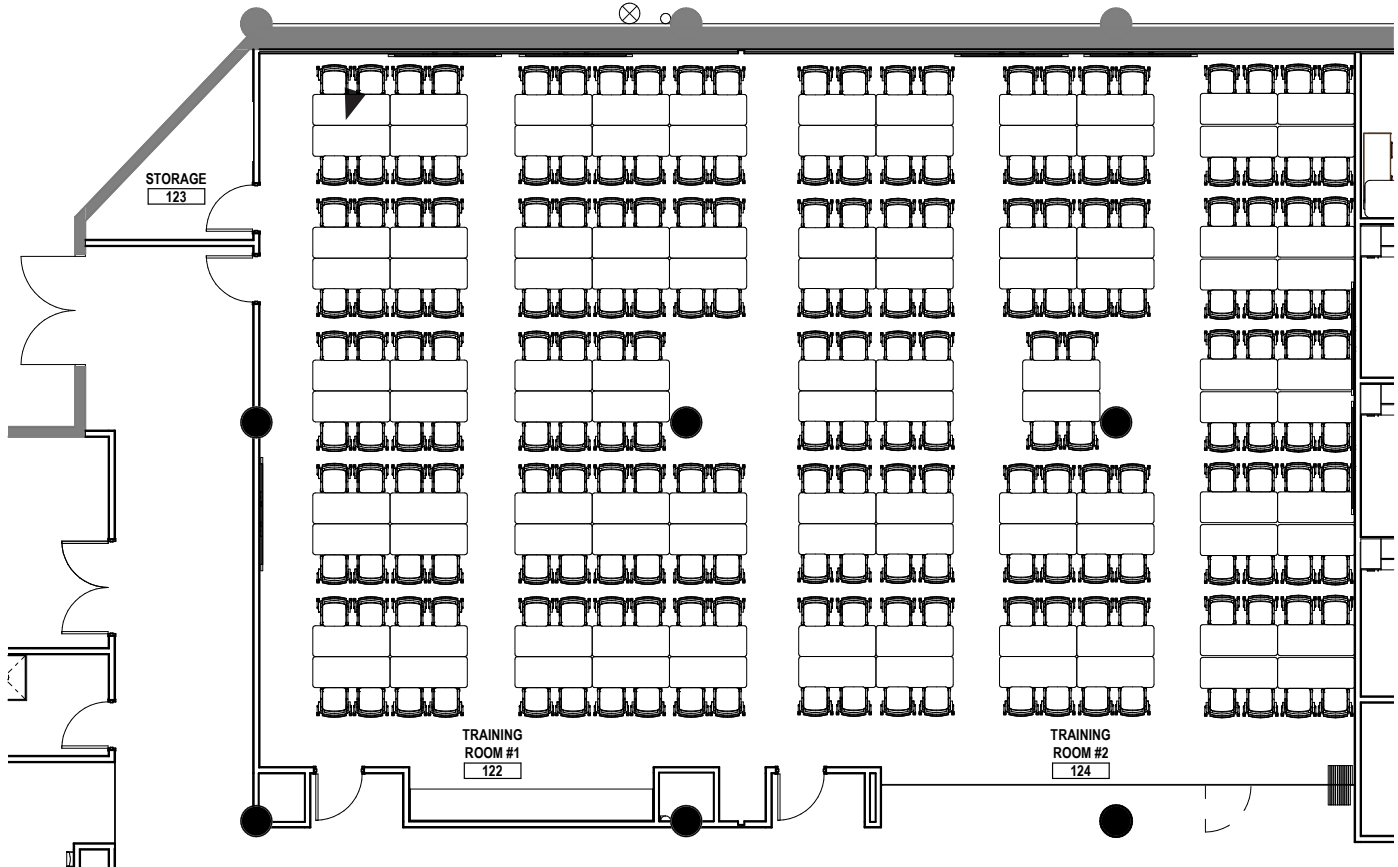
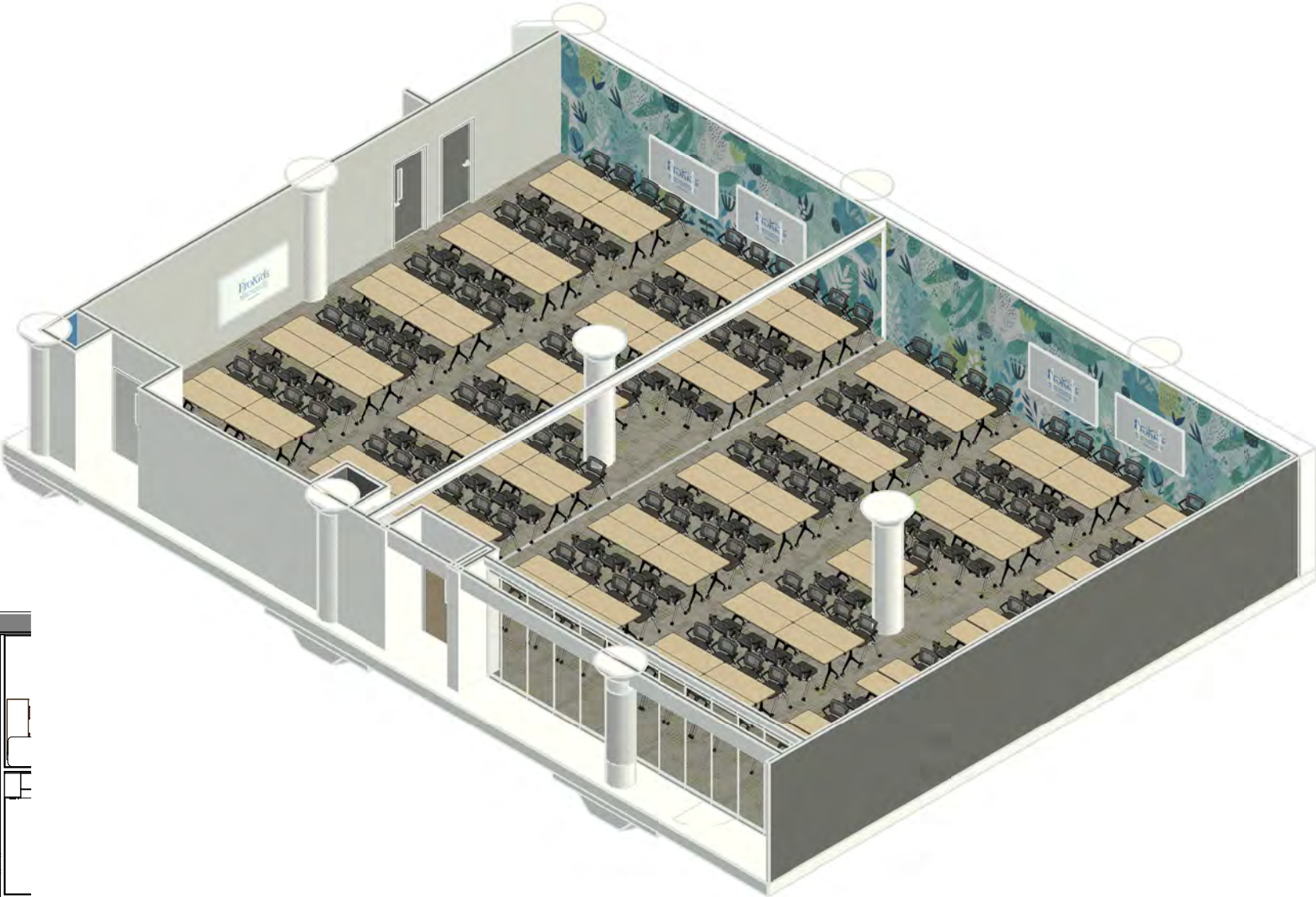
TRAINING ROOM 2
116 people
58 - 60" W x 24" D tables

LAYOUT #4

Collaborative

1 large room with training tables
maximum capacity 212 people

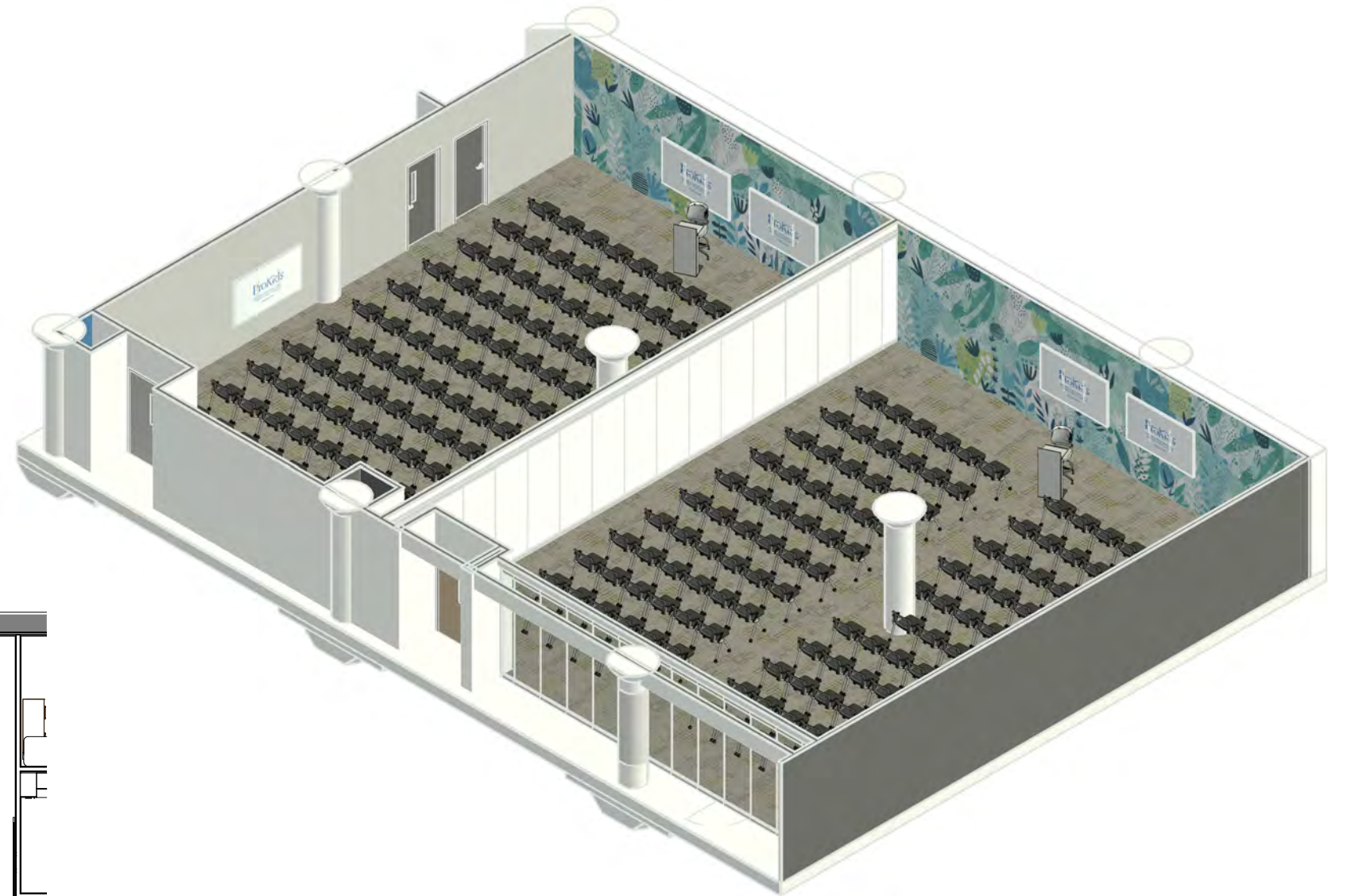
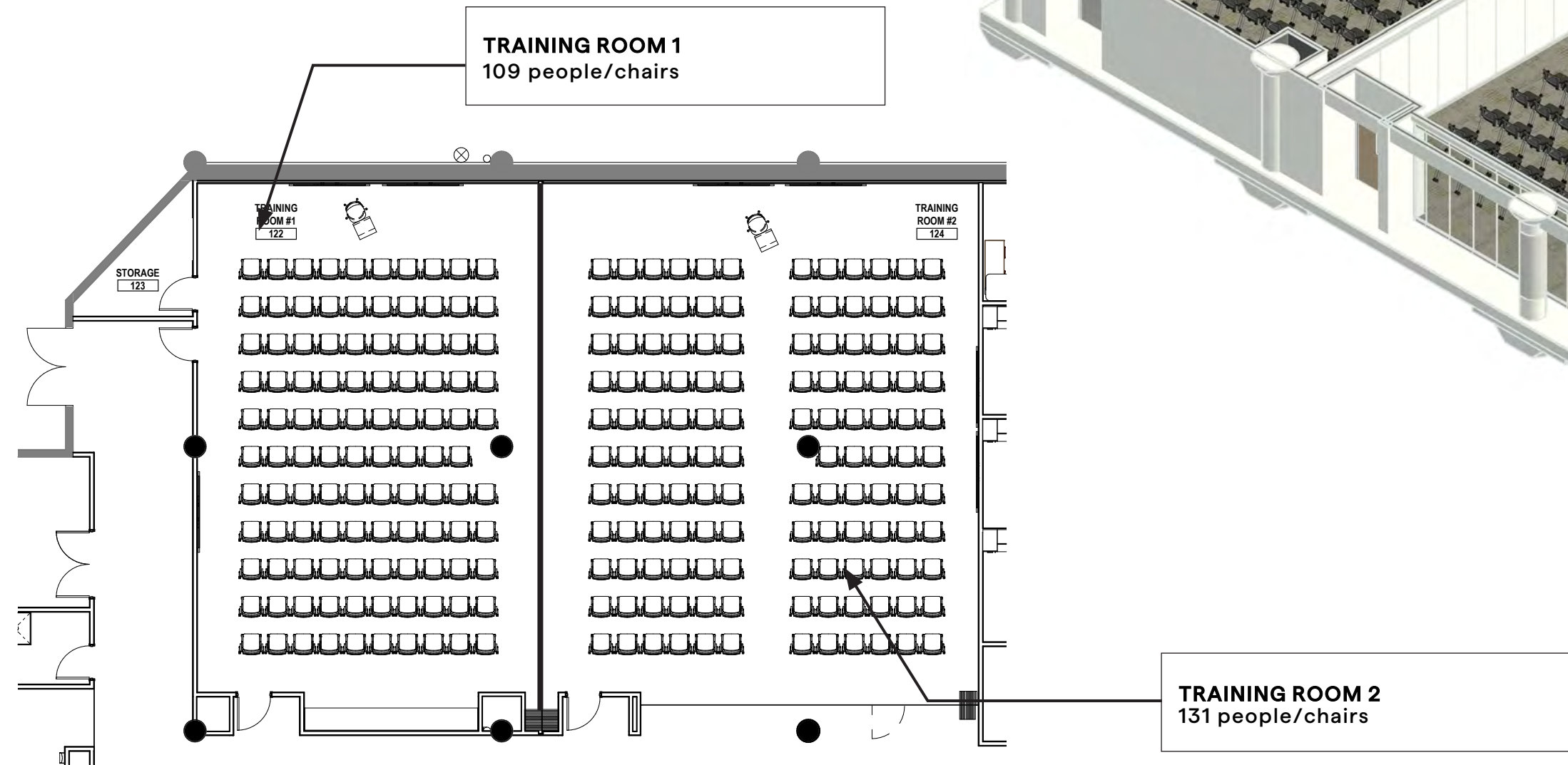
TRAINING ROOMS 1 & 2
212 People/chairs
106 - 60" W x 24" D tables



LAYOUT #5

Lecture

Separate rooms with chairs only
maximum capacity 240 people



LAYOUT #6

Lecture

1 large room with chairs
maximum capacity 262 people

TRAINING ROOMS 1 & 2
262 people/chairs

